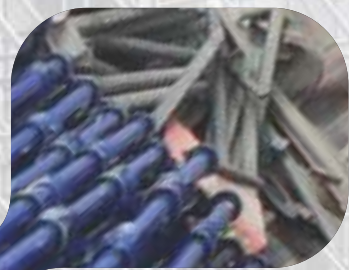
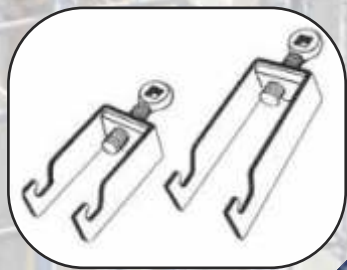




Ishicon Engineering

...Concrete supporters





*Infosys development center Pune
built using our equipments*

Ishicon Engineering is a company which specializes in manufacturing and marketing of a wide range of steel centering & scaffoldings throughout the country.

We believe that success is not a point, indeed; it's a series of processes that inculcate all the latest developments prevailing in industry. Keeping this in mind, we make extensive research work at regular intervals so that our clients get the latest and up-to-date range of scaffolding products.

Warehousing

Our capacious warehouse is a very significant part of our infrastructure. All the construction support equipments are stored in a protected environment in the warehouse. Which is well looked after by a competent inventory management system. Movement of the stock from the manufacturing unit to the godown, and from there to the end destination is tracked to avoid any kind of misplacement. Our packaging unit takes utmost precaution to give the products damage-free packaging suitable for warehouse storing and transportation to end destination.

Mission

Our mission is to market our quality product by creating awareness among contractors and educating them about all technical parameters of our products. Our commitment to customers is to manufacture good quality product at economical cost and provide reliable services at all times.

Clients Satisfaction

Repeat business is the lifeline of our business and we work hard to achieve high rates of customer satisfaction; from the comprehensive and high quality services through the proactive support and cost-effective pricing.

**We endeavour to produce products of the highest quality
"On Time" "All the Time".**

Adjustable Props

We manufacture robustly designed range of Roll Threaded Adjustable Steel Props. Fabricated using 60.3mm OD tubes for outer and 48.3mm OD tubes for inner part.

These props are used for beams and slabs as well as supporting for form work, column also. Our props can easily carry varying range of loads required by construction industry. The range offers solutions to the construction industry for different varieties of building construction and repair. We are dealing in Maharashtra, Goa, Andhra Pradesh, Karnataka, Gujarat, Rajasthan. With stringent quality control and paying attentions to the details, our professionals make sure to deliver these props as per the requirements of our valuable clients. These props are extensively used in construction industry for supporting different devices. Further, our esteemed customers can avail these adjustable props from us in a variety of specifications as per their requirements at a very competitive price.



Features

- Robust design with dimensional accuracy
- Corrosion resistant surface
- Withstand any misalignment and jerks
- Highly durable and very low maintenance requirement
- User friendly design for easy handling
- Fine finish

Sizes offered

Model No.	Outer Tube (mm)	Inner Tube	Height of use (mm)		Safe Axial Load in Kgs.	
			Min.	Max.	Close	Extended
IEP-1	1500	1500	1500	2700	3000	2250
IEP-2	1500	2000	2000	3200	2950	2200
IEP-3	2000	2000	2000	3750	2875	2000
IEP-4	2000	2500	2500	4250	2475	1500
IEP-5	2000	3000	3000	4700	2275	1150
IEP-6	3000	3000	3000	5600	2500	1350

Adjustable Telescopic Spans

The adjustable span is assembled with an outer sliding & one inner. Spans are considered integral structural construction scaffolding components. Which are used to provide support to the entire structure. As per the need they can be adjusted & are extensively used to support floor forms during lying of slabs.

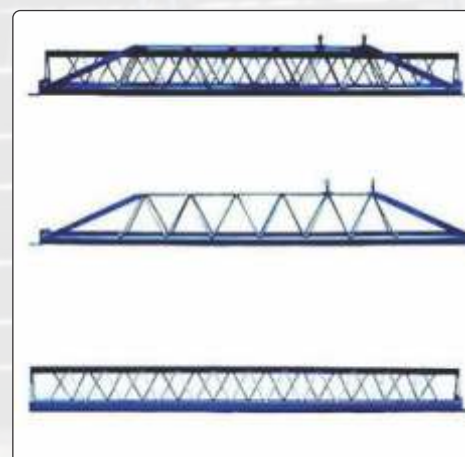
Features

- Simple to use
- Different adjustments can be made
- Has high load bearing capacity
- Maximum strength & safety
- Any inner with any outer combination used for supporting beam bottoms and centering sheet.

Technical Specifications

- Main body of outer & inner members are made of 14/12 gauge M.S. sheet.
- Bottom of the outer member is made of 50x6 mm M.S. plate
- Bottom of the inner member is produced using 40x40x6 mm T angle
- Lattice is made of 10mm dia. M.S. round bar
- Bearing angle are of 75x75x8 mm size

Sizes	Range	
	Min. m	Max. m
ESO + ESI	1.75	2.70
ESO + SI	2.35	3.40
SO + ESI	2.40	3.45
SO + SI	2.45	4.15
SO + LI	3.05	4.75
LO + SI	3.15	4.90
LO + LI	3.15	5.50



Cuplock System Components

Features

- Superior finish makes easy installation
- Can withstand against adverse conditions
- Can bear high pressure due to strong construction
- Utmost resistant against corrosion
- Sturdy design ensures its high durability



Sizes of Cuplock Verticals/Standards

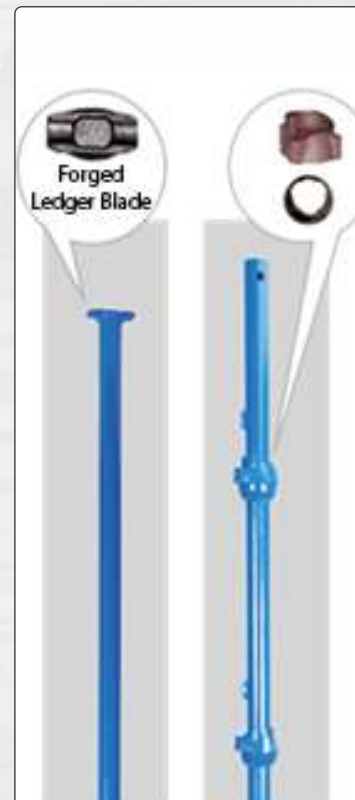
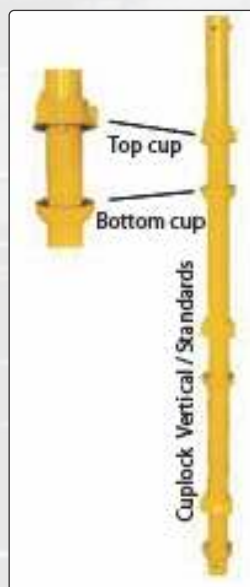
Sizes in mm	No. of Cups @ 500/1000mm	Self - Weight in Kgs./Nos.
3000	6/3	13.65
2500	5/3	11.40
2000	4/2	9.15
1500	3/2	6.85
1000	2/1	4.60
500	1/1	2.30

Load Carrying Capacity

Bracing Length	Permissible Load in Tonnes (Yst 210 N/mm ²)	
	Medium class	Heavy class
500	4.66	6.32
1000	4.12	5.57
1500	3.54	4.74
2000	2.67	3.50

Sizes of Cuplock Horizontals

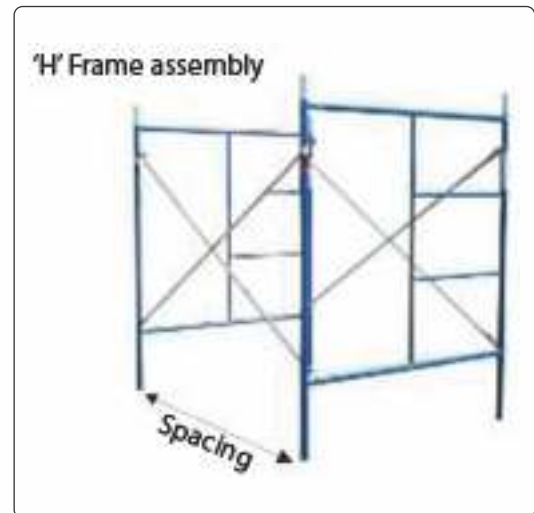
Sizes in mm	Length in mm	Self - Weight in Kgs./Nos.
2400 C/c.	2352	7.30
2000 C/c.	1952	6.15
1800 C/c.	1752	5.50
1500 C/c.	1452	4.65
1200 C/c.	1152	3.70
1000 C/c.	952	3.15



Cuplock Ledgers / Horizontals

H - Frame Scaffolding System

An assembly that consists of rigid welded frame of two vertical and horizontal pipes which are interconnected by scissor type cross braces through pins and spring clips is called as an 'H' Frame Scaffolding System

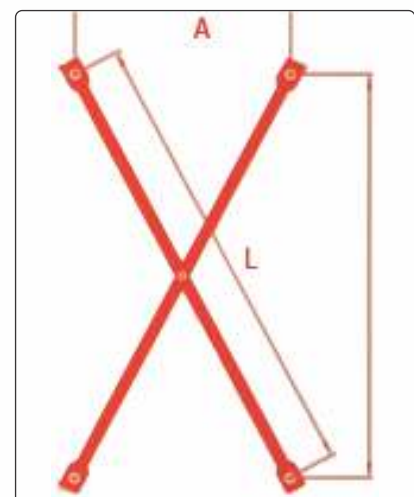


Sizes of 'H' frames

Sr. No.	Size(HxW)mm	Self - Weight in Kgs./Nos
1	2000 x 1000	21.00
2	2000 x 1250	22.65
3	2000 x 2000	28.00
4	2400 x 1000	27.45 [^]
5	2400 x 1250	29.15 [^]

[^] = Weights for 'H' frame with ladder.
(Ladder made of 25NB pipe = 3.75kgs/Nos).

Note: Weights indicated above are subject to tolerance of +/- 3.0 %.



Cross Bracings

Sr. No	Size (AxB) in mm	Spacing in mm	Length (L) in mm	Pipe Dia.	Self Wt. in Kgs.
1	2500x1500	2500	2950	25NB/20NB	9.50 / 8.40
2	2000x1500	2000	2550	25NB/20NB	8.20 / 7.15
3	1250x1500	1250	2000	25NB/20NB	6.50 / 5.65

Note: Weights indicated above are subject to tolerance of +/- 3.0 %.

Centering Plates

It is available in 3ft X 2ft size or 600mm X 900mm. It is made of 14 gauge sheet with 25mm X 25mm X 5 mm thick angle. Its weight is app. 15kgs.



Box Type Span

Manufactured by 50x50mm square outer and 40x40mm inner, thickness 3mm.



Climbing Wallform System and Formwork

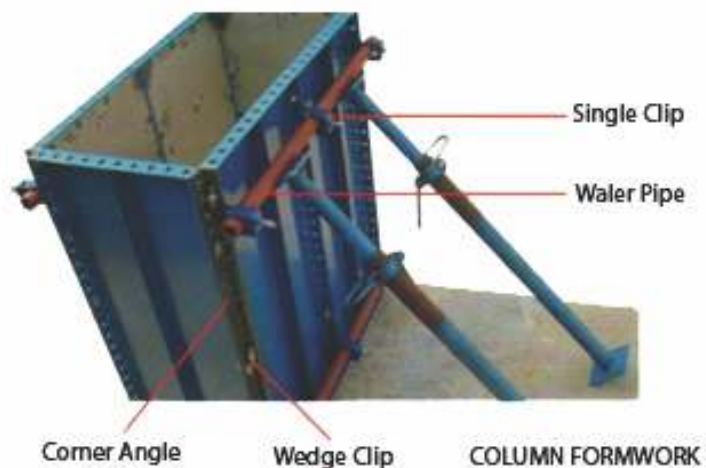
Wallform is ideal for heavy and light duty multi-purpose formwork which gives maximum economy with excellent concrete finish.

Wallform system of steel shuttering comprises of standard panels of different sizes with longitudinal stiffener, channel or heavy duty soldiers and tubes or channel walers. All these components are assembled together by four types of clips of unique design.

Wallform panels and soldiers are manufactured out of 2.5 / 3.0 mm thick M.S. sheets with slotted M.S. angle of 45 x 45 x 5 mm or 50 x 50 x 6 mm sizes.

Available Sizes	Weight in Kgs.
1200 x 200	14.30
1200 x 230	15.25
1200 x 300	19.00
1200 x 400	24.00
1200 x 450	25.25
1200 x 500	27.00
1200 x 600	33.25
1200 x 650	37.00
1200 x 700	39.70

Note: Weights Indicated above are subjected to tolerance +/- 3.0%



Accessories

 <p>Ledger Blade M. S. Forged</p>	 <p>Top Cup</p>	 <p>Forged Swivel Clamp 40 x 40, 40 x 50, 50 x 50 mm</p>	 <p>Expanding Jointpin</p>								
 <p>Ledger Blade M. S. Forged</p>	 <p>Single Clips / Double Clips</p>	 <p>Forged Girder Coupler For Pipe OD 48.3mm (AS-157)</p>	 <p>Anchor Nut</p>								
 <p>Forged Right Angle Coupler</p>	 <p>Double Coupler For Pipe OD 48.3mm (EN - 74 / BS - 1139)</p>	 <p>Forged Swivel Coupler</p>	 <p>Wedge Clips</p>								
 <p>Casting Go-Go Nut Go-go clamps are made out of C. I. casting with MS bolt to clamp</p>	 <p>Jack Nut Jack nuts are casted. Available in two types light & heavy duty. It is available as required galvanized or non galvanized</p>	 <p>Adjustable U Head <table border="0"> <tr> <td>Solid Bar Size</td> <td>Hollow Pipe Size</td> </tr> <tr> <td>32*350</td> <td>38*450</td> </tr> <tr> <td>32*450</td> <td>38*600</td> </tr> <tr> <td>32*600</td> <td>38*750</td> </tr> </table> </p>	Solid Bar Size	Hollow Pipe Size	32*350	38*450	32*450	38*600	32*600	38*750	 <p>Cold Rolled Tie Rod Material :EN-8 Size :Ø 16mm, upto 6mtr. length Working Load :90 KN Weight :1.47 Kgs / Mtr</p>
Solid Bar Size	Hollow Pipe Size										
32*350	38*450										
32*450	38*600										
32*600	38*750										



Ishicon Engineering

Address: Sr. No. 34/2, Swapnapurti, Shivshambho Nagar, Lane No. 3,
Katraj - Kondhwa Road, Katraj, Pune - 411046, India

Phone: +91 94220 21380 / 93257 75292 **Fax:** 020 - 2683 1887

Email: sales@ishiconengineering.com

www.ishiconengineering.com