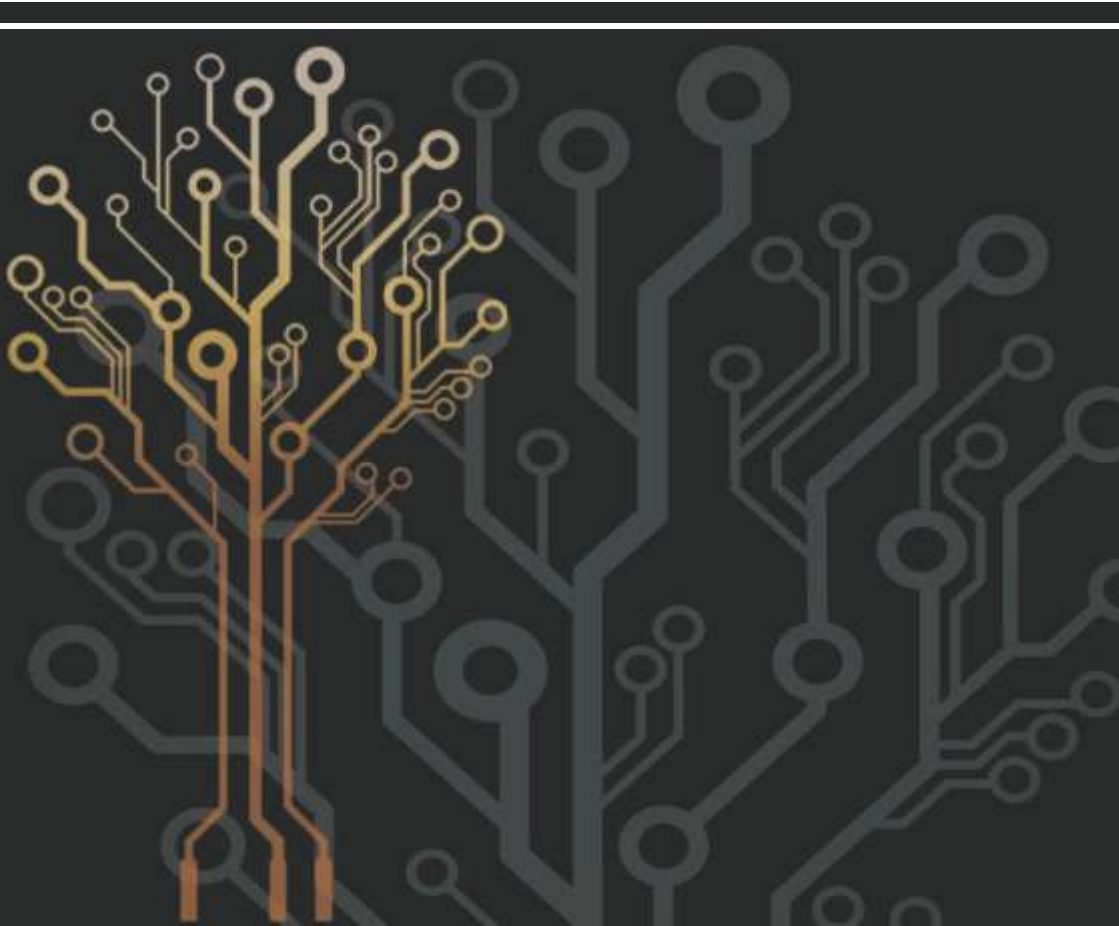




Reliability in everything we do!



An ISO Certified & CRISIL Rated Company

www.nuteckpowersolutions.com

About Us

Established in the year 1992, we, "Nuteck Power Solutions P Ltd", are glad to introduce ourselves as one of the leading Manufacturer and Supplier of comprehensive range of Power Solutions. From modest beginning, our consistent performance has helped us to climb the ladder of success. Our product range comprises Commercial & Industrial Battery Chargers, Low & High Power DC - DC Converter, AC DC Adapters, Switch Mode Power Supply (SMPS), Over Voltage Protectors, Battery Backup Unit, Surge Protection Devices, Voltage Protection Relay, Automatic Voltage Regulator etc.

We have with us cutting edge infrastructure facility that is a testimony to our capability and concern to serve clients with products as required by them. Our R&D units allow us to flawlessly design, develop and reassess quality of our high end range of Power Products & Solutions. Driven by a passion, our quality monitoring team ensures best performance, adaptability, durability and unique design standards that are delivered from our end.

Our manufacturing unit also has capability for seamless adjustment as well as making amendments without causing discrepancy to production chain. The efforts made to deliver as per client's specific requirements has also helped in generating tremendous good will among them as well as made us their trusted ally in their enhanced productivity scheme.

We export our products all around the world. We deal in bulk orders.

Mission

- To build upon the strength of each team member.
- To continually improve our products, services and process.
- To produce quality products for varying electronics industries.

Vision

In the era of customer delight, to perform more than the customer expectations, continuous improvements in the quality system are carried out. Furthermore, constant efforts are made to establish the company as a value adding, strategic and a life time supplier.

SMPS

➤ SE Series

➤ SH Series

Highlights

- Universal AC Input Supply Range(90 ~ 300 VAC) withstand 440 VAC
- 100% Full Load Burn in test
- Working temperature - 5 DegC to 70 DegC
- Withstand fluctuations in supply
- Designed to meet UL60950-1, EN55011/EN55022/EN61000-4-2/3/4/5/6/8/11
- Protections: Short Circuit / Over Load / Over Voltage / Over Temperature

Model No. SE72



Model No. SH120



Standard models of SMPS in SE series are SE18, SE36, SE72, SE120, SE240 & in SH series are SH72 & SH120.

:: Applications ::

- Telecommunication
- Security Systems
- Control & Automation
- Renewable Energy Sector
- Medical Equipments

Battery Chargers

Highlights

- Three Stage Charging
- Universal AC Input Supply Range
- 100% Full Load Burn in test
- Available from 12V ~ 288V DC & 1A to 40A current
- Working Temperature -5 DegC to 70 DegC
- Automatic Selection of FLOAT and BOOST mode
- Designed to meet UL60950-1, EN55011/EN55022/EN61000-4-2/3/4/5/6/8/11
- LED Indication for Float, Boost and Battery Rev. Polarity, Mains ON
- Protections: Short Circuit / Over Load / Over Voltage / Battery Reverse Polarity Protection

Model No. B360 / C1 B480 /
B480-24D / BDC120-12



Standard models of Battery Chargers in our range are B120, B240, B480, B720 & B960.

:: Applications ::

- Automobile Industries
- Telecommunication
- Power Generation
- Material Handling Equipments
- Switchgear Industries
- Railways

DC-DC Converters

Highlights

- 100% Full Load Burn in test
- 2:1, 4:1 Wide Input Supply Range
- Built in EMI filter, Low ripple noise
- Working Temperature - 5 DegC to 70 DegC
- Designed to meet EN55011 / EN55022, En61000 - 4 - 2
- Miniature size, High efficiency, Long life and High reliability
- Protections: Short Circuit / Over Load / Over Voltage / Over Temperature / Input Reverse Polarity



Model No. DB180 / Dc36 - 12 /
DC50-12 / DC120

Standard models of DC-DC Converters with power ranges varying from 36Watts to 360 Watts.

:: Applications ::

- Lighting
- Medical
- Automotive Industries
- Renewable Energy Sector
- Telecommunication
- Railways

Battery Backup Unit

Highlights

- Three Stage Charging
- Universal AC Input Supply Range
- 100% Full Load Burn in test
- Battery Voltage 12 ~ 96VDC
- Working Temperature - 5 DegC to 70 DegC
- Automatic Selection of FLOAT and BOOST mode
- Designed to meet UL60950-1, EN55011/EN55022
- User - Friendly LED indications
- Protections: Short Circuit / Over Load / Over Voltage / Battery Reverse Polarity Protection

Model No. BBU 100



:: Applications ::

- Switchgear Industries
- Telecommunication
- Medical Equipments
- Security Systems
- Control & Automation

Surge Protection Devices

Highlights

Model No. SPD-05-1P240P/1P240S

- Available up to 40kA max., discharge current, 8/20uS
- Response Time < 25nsec
- Thermally protected Varistor technology
- Visual fault warning by LED indication
- Design refers to UL1449, EN61643-11 2012 Type 2



:: Applications ::

- Household Appliances
- Lighting
- Telecommunication
- Control Panel

LED Drivers

Highlights

Model No. NPS 18/30/45

- Universal AC input 90VAC ~ 300VAC
- Protections: Short Circuit / Over Current / Over Voltage / Over Temperature
- Cooling by free air convection.
- Class II Power Unit, no FG
- Built in active PFC function
- Small and Compact size
- ATD < 10%



Standard LED Driver models are in the range of 9 watts to 200 watts.

:: Applications ::

- Indoor Lighting
- Street Lighting

Over Voltage Protector

Highlights

- Input supply range 150 ~ 470VAC
- Withstand 470VAC Continuous
- Output Voltage 165 ~ 275VAC
- High reliability
- Fixed trip delays
- Operating Temperature 0 ~ 70 DegC
- Fixed trip setting for Under Voltage / Over voltage
- User - Friendly LED indications
- Settings can be made as per customer requirements

Model No. O-3-20



OVP - 3PH

Model No. O-1-3KVA



OVP - 1PH

Standard models in three phase OVP are with 7.5KVA, 10KVA, 15KVA, 18 KVA, 20 KVA, 25 KVA & 30 KVA output ratings

Standard models available in single phase OVP are with 3KVA, 6 KVA & 10 KVA outputs.

:: Applications ::

- Motor Drives
- Control & Automation
- UPS Systems
- Medical Equipments

Fan Fail Relay

Highlights

- Settable hysteresis to cut OFF & ON
- NTC (10K) temperature sensor
- Settable temperature setting
- Runs on 40 - 60 VDC
- Fan failure indication and alarm
- Temperature sensor failure indication
- Fan selection from 1 to 6 fans

Model No. FER-48V06F



:: Applications ::

- Heat Management Systems
- Control & Automation
- UPS Systems

Power Relay Module

Highlights

- 5 mm Green LED indication / Channel
- Free wheeling diode across coil
- Positive looping for coils
- Snubber for Power Contacts
- Contact Rating 70A at 14V DC
- Operating Temperature 0 - 70 Deg.C / 85% RH
- Storage Temperature - 20 Deg.C - 85 Deg.C
- Mounting : Din Rail / Panel

Power Relay Module



- ### :: Applications ::
- Genset Starter ON/OFF

SGV Controller

Highlights

- Surge: Max. discharge current 20kA, 8/20uS (1 phase) & 40kA, 8/20uS (3 phase)
- Fast response time (Less than 25ns) for surge protection
- Protection against Over / Under Voltage, Neutral Loss, Ground Lift
- Fast response time (Less than 100ms) for voltage protection
- User - Friendly LED indications
- Fixed trip setting for Under Voltage / Over Voltage

Model No. SGV - 1



Single Phase

Model No. SGV - 3



Three Phase

:: Applications ::

- Automation
- VFD Drives
- UPS Systems

Eco - Saver

Highlights

- Delivers 8 -12% Energy Savings
- Reduce Reactive Power
- Reduce Circuit Resistance
- Improve Conductivity
- Increase Power Factor
- High Reliability
- Protection against Over Voltage / Under Voltage / Ground Lift



:: Applications ::

- Electronics
- Metal
- Plastic
- Food & Beverage
- Pharmaceutical
- Semi-conductor
- Wafer Fab
- Water Treatment
- Cold Room
- Commercial
- Industrial
- Data Center
- Educational Institute
- Hospital
- Hotel & Resorts
- Shopping Mall
- Supermarket
- Restaurant

*Note: Designs & specifications are subject to change without prior notice due to constant improvement in design & technology.

Other Products

- Adapters
- Relay Interface Modules
- POE Midspan Injectors & Splitter Adapters
- Reverse POE Injectors & Adapters
- Automatic Voltage Regulators
- Voltage Protection Relays & Current Protection Relays



Authorised Dealer



Contact Us

Nuteck Power Solutions P Ltd.

1st Floor, 115/5, Ramtekdi Industrial Area, Hadapsar, Pune - 13, MH. India.

Phone: +91 20 26811162 **Mobile:** +91 9545211377, 9552545012

Email: info@nuteck.in | **Website:** www.nuteckpowersolutions.com