

We Engineer Value



ROVEMA
INDIA



www.rovemaindia.in

An ISO 9001:2015 Certified



ROVEMA INDIA PVT. LTD.

● AHEAD ● ABOVE ● BEYOND

ROVEMA INDIA offers complete automation solutions for a wide variety of industrial and consumer requirements from sectors like food, dairy, agrochemicals, home and personal care. ROVEMA INDIA is a respected name for the value it offers to its customers through innovative engineering solutions.

As **ROVEMA's** subsidiary, **ROVEMA INDIA** has a strong presence throughout Asian and African continents. Focusing on the rapidly expanding Asian and African market, ROVEMA INDIA has an installed base of more than **1300+ machines in over 33 countries**. ROVEMA INDIA employees over 150 talented people for their integrated design, production, and service facility at Sanaswadi near Pune, in the heart of Western India's industrial belt.

Serving Varied Sectors

We have modular machines in each vertical, which could be configured for the application and accuracy requirements at different price points to suit our customer's budget. We have variety of baggers and volumetric as well as weigh metric filling system solutions under one roof. We can provide the most cost effective solutions for your requirements. We have been putting, continuous efforts in the development of new technologies, for innovative products. Through innovative and economical solutions, we strive to ensure success and growth of our customers.

Industries Catered To

- Dairy
- Personal Care
- Snacks
- Healthcare
- Detergent
- Rice
- Food
- Cosmetic
- Grains
- Seeds
- Nutraceuticals
- Chemicals and more....

Worldwide Client Footprint



Service Locations in India

- Delhi
- Kolkata
- Hyderabad

International Agents

- Bangladesh
- Malaysia
- Philippines
- Vietnam
- Kenya

Rovema India Advantage

Rovema India's unique modular design concept, allows solutions at different price points, while ensuring future upgradability for increasing production demands. Our machines can be configured as per application and speed requirements for automating primary packaging in food, FMCG, agriculture & dairy industry.

At Rovema India, we want to be AHEAD, ABOVE, BEYOND the competition by providing innovative & economical solutions to our customers to ensure their success & growth at every step.

- Excellent film stability at all speeds on all machines.
- Machine is capable of handling any heat sealable film.
- Available in Eco, Servo and Continuous versions.
- Modular VFFS Twin tube machines provides 25 % less space utilization, compared to two single machines.
- Wide range of pack styles and sizes.
- Multilane solutions for sachets & 3 side seal packs
- Fill & seal in pre-made cups
- Easy change over between pillow pouch to gusseted or block bottom.
- Specially configured designs available for Quad Pack, Penta Seal and Three side seal twin tube duplo.
- Machine can easily be connected with required dosing equipment
- High throughput per square meter
- Economical on power and air consumption

POUCH TYPES



Pillow Pouch



Gusset



Quad Pack



Block Bottom



Penta Seal



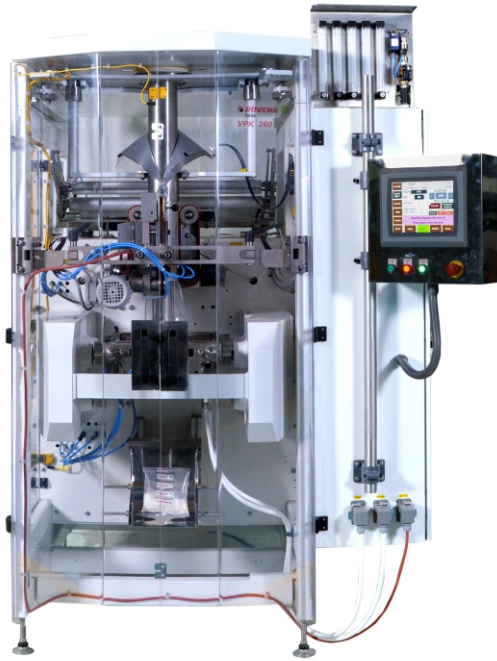
3 Side Seal



4 Side Seal



Jar



HIGHLIGHTS

- **Speed** : up to 180 bags/min (Dry running speed)
- **Sealing Force** : Up to 5000 N
- **Range** : Up to 4.5 litres
(considering our standard pack of 2 kg milk powder with bd 0.45)
- **Film Width** : Up to 600 mm

APPLICATIONS



TECHNICAL SPECIFICATIONS

Machine Dimension (L x W x H) mm.	2565 x 1750 x 2090
Reel width X Diameter	560 X Ø450 mm.
Reel core diameter	76 mm.
Connected load	230/400N/PE/8KVA
Pneumatic connection	Dry air at 6 bar
Air consumption	1 N litre/cycle (depending on cooling)
Machine colour	RAL 9003 Signal White
Gross weight approx.	1100 kg.
Bag styles	Pillow bag, Gusset, Block bottom bag
Seal type	Central vertical seal (seal center = bag center) overlapping seal & fin seal
Output (mech.) [cycles/min]	Up to 120 for Pillow bags & Up to 80 for Gusseted and Block bottom
Max. Forming set size	FS 260 Pillow
Bag width (min. - max.) [mm.]	60 - 260 Pillow Bags, 60 - 220 Gusseted Bags, 60 - 220 Block Bottom
Gusseted depth / bag depth block bottom	5 - 40 mm./ 40 - 80 mm.
Bag cut off length (min. - max.) [mm.]	120 - 450 mm.
Bag height	220 (without pedestal), 350 (incl. pedestal)
Filling volume (max.) [cm ³]	up to 4500
Seal force (max.) [N]	up to 5000
Class of protection	Ip54
Recipe storage	Standard : 100
Operating temperature (min. - max.) [°C]	+5 ... +35
Storage temperature (min. - max.) [°C]	20 ... +50
Humidity [%]	15 ...95; no condensation

Elevate Your Packaging Line With Data-Driven Efficiency



HIGHLIGHTS

Optimize Packaging Precision & Efficiency With Our Advanced Check Weigher Solutions

- Get actionable real time insights.
- Reduce wastage by preventing underfilled and overfilled packages.
- Improve plant efficiency by identifying bottlenecks.
- Protect your brand’s reputation by meeting stringent quality standards & regulations.
- Get future-ready for seamless integration of check weigher with your existing set-up.

TECHNICAL SPECIFICATIONS

Model	Intelli CW2K
Weighing Range	4 gm to 2000 gm
Belt Height From Floor	700±50 mm
Weighing Conveyor Platform	450 x 340 mm
Conveyor Belt	240 mm (Width)
Overall System Length	1460 mm
Sensor	Load Cell
Resolution	0.2 gm
Construction	Stainless Steel/ Mild Steel
Rejection Mechanism	Pusher Type/ Air Nozzle/Diverter Arm
Display	Graphic LCD
Power Requirement	Single Phase 220 V AC / 50 Hz
Pneumatic Requirement	6 Bar



HIGHLIGHTS

- Optimum use of footprint
- Compact two-lane design, to avoid use of two separate systems
- Reduces cost of ownership

TECHNICAL SPECIFICATIONS

Model	IntelliCW 2K T
Weighing Range	4 gm to 2000 gm
Belt Height From Floor	700±50 mm
Weighing Conveyor Platform	450 x 340 mm
Conveyor Belt Width	240 mm
Overall System Length	1475 mm
Load Cell	Strain Guage
Resolution	0.2 gm
Construction	Stainless Steel/ Mild Steel
Rejection Mechanism	Pusher Type
Display	Graphic LCD
Power Requirement	Single Phase 220 V AC / 50 Hz
Pneumatic Requirement	6 Bar



TECHNICAL SPECIFICATIONS

Model	IntelliCW 5K
Weighing Range	10 gm to 5000 gm
Belt Height From Floor	700±50 mm
Weighing Conveyor Platform	550 x 380 mm
Conveyor Belt Width	280 mm
Overall System Length	1670 mm
Load Cell	Strain Guage
Resolution	0.5 gm
Construction	Stainless Steel/ Mild Steel
Rejection Mechanism	Pusher Type
Display	Graphic LCD
Power Requirement	Single Phase 220 V AC / 50 Hz
Pneumatic Requirement	6 Bar

TECHNICAL SPECIFICATIONS FOR ALL MODELS

Model	Weight Range	Weighing Platform Size (Length x Width)	Belt Width (in mm)	Least Count
Intelli CW2K	4 gm to 2 kg	450 x 340	240	0.2 gm
Intelli CW5K	10 gm to 5 kg	550 x 380	280	0.5 gm
Intelli CW2K (Twin)	4 gm to 2 kg	450 x 340	240	0.2 gm

FLEXI BAG 280/400 SERIES



HIGHLIGHTS

- **Speed** : Available speeds 80, 120 & 160 dry cycles per min.
- **Range** : Up to 6 litre pouch volume.
- **Film Width** : Up to 585 mm.

APPLICATIONS

- | | | | |
|---|---|--|--|
|  |  |  |  |
| • Sugar | • Spices | • Milk Powder | • Breakfast Cereals |
|  |  |  |  |
| • Rice | • Coffee | • Tea | • Snacks |
|  |  |  |  |
| • Agrochemicals | • Detergents | • Lentils | • Frozen Food |
|  | | | |
| • Liquid Adhesives | | | |

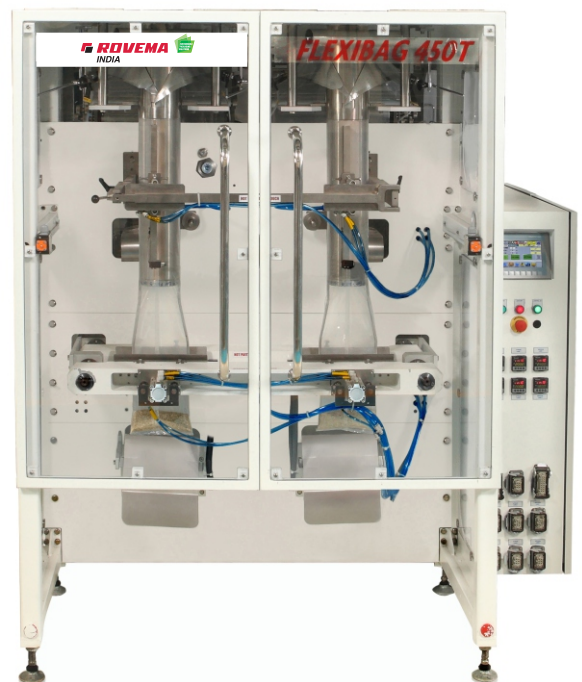
FLEXI BAG 450 SERIES

HIGHLIGHTS

- **Speed** : Up to 160 cycles/ min per lane.
- **Range** : Up to 3.5 litre pouch volume per lane.
- **Film Width** : Up to 450 mm

APPLICATIONS

- | | | | |
|---|---|---|---|
|  |  |  |  |
| • Sugar | • Spices | • Milk Powder | • Breakfast Cereals |
|  |  |  |  |
| • Agrochemicals | • Detergents | • Lentils | • Rice |



FLEXI SACHET 600 SERIES

HIGHLIGHTS

- **Speed** : Available speeds 120 & 160 dry cycles /min.
- **Range** : Up to 200 ml pouch volume.
- **Film Width** : Up to 600 mm.

APPLICATIONS



● Shampoo/Conditioner



● Hair Oil



● Liquid Detergent



● Detergent



● Ketchup



● Mayonnaise



● Powder



FLEXI SACHET 1200 SERIES

HIGHLIGHTS

- **Speed** : Up to 120 & 160 cycles/ min .
- **Range** : Up to 200 ml pouch volume.
- **Film Width** : Up to 1200 mm.

APPLICATIONS



● Shampoo/Conditioner



● Hair Oil



● Liquid Detergent



● Detergent



● Ketchup



● Mayonnaise



● Powder



SINGLE / TWIN ROTARY CUP FILLER



Note

Also Available In Multilane Sliding Cup Filler

FEATURES

- Opening and closing of cups is controlled by a special cam.
- Feeding hopper with scraper.
- Change of cup sets can be executed tool-less.
- Cup volume adjustable in a ratio of 1:1.8, by hand wheel.
- Indication for cup opening by means of a scaled pointer.
- Weights outside the range of cup sets can be achieved through multiple dumps.
- Min dosing volume 25 cc. , Max. dosing volume 3000 cc.

APPLICATIONS

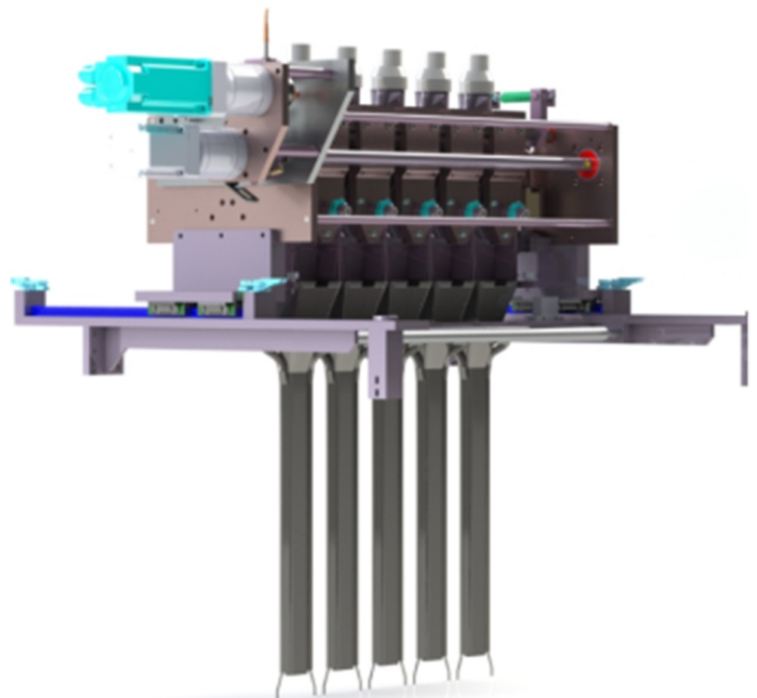


TILTING CUP FILLER

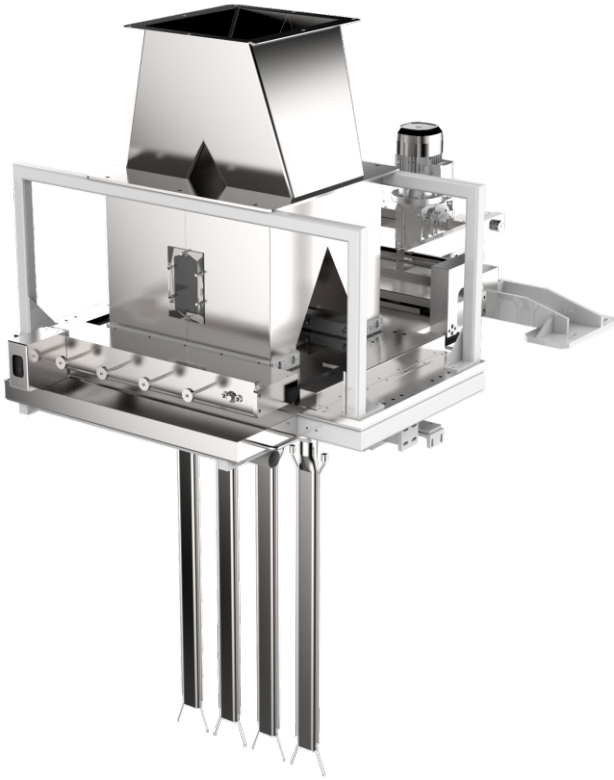
FEATURES

- Excellent for dosing free flow dusty powders.
- Servo driven volumetric filler with volumetric correction through HMI.
- Multi dump for higher pack sizes.
- Min dosing volume 10 cc. , Max. dosing volume 310 cc.

APPLICATIONS



MULTILANE CUP FILLER



FEATURES

- Product contact parts are made from stainless steel 304 & 316L
- Volume adjustment from HMI by means of motorized assembly
- Individual lane volume correction through easy knob adjustment
- Easily controls level of product by level sensor
- Min dosing volume 30 cc., Max. dosing volume 300 cc.

APPLICATIONS



ACCUSCREW AUGER FILLER

FEATURES

- Ideal for non-free flowing products.
- Auger height manually adjustable.
- Servo motor control for high accuracy
- Easy to change format parts.
- Also available as a standalone unit.
- Min dosing volume 5 cc., Max. dosing volume 200 cc.

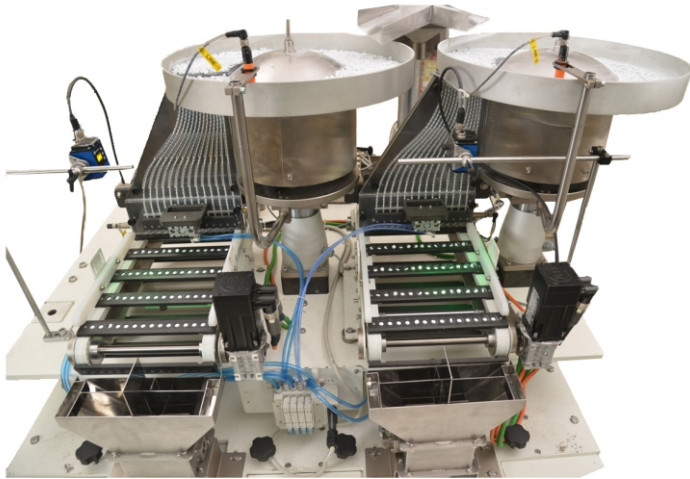
APPLICATIONS



Note

Also Available In Multilane Sliding Cup Filler

MULTILANE TABLET FILLER



FEATURES

- Tablet counting filler enables singling of tablets with counting mechanism.
- All lanes can be easily cleaned
- Tablet counting system has food grade contact parts for food applications.
- Hopper level control with feedback sensor for integration with upline or product feeding line.

APPLICATIONS



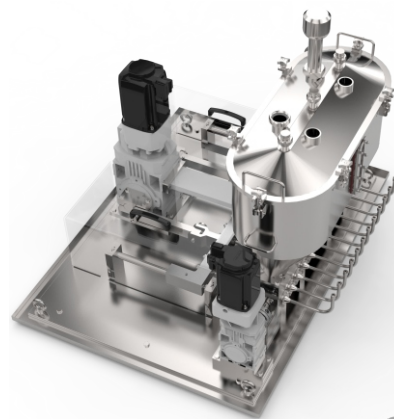
- Tablets

VOLUMETRIC LIQUID DOSING

MULTILANE PISTON FILLER

FEATURES

- Servo piston comes with a unique suck back feature
- Different nozzle system available to cut-off the product at the end of filling cycle
- Piston filler handles high viscosity fluids for large pouch widths
- All parameters and volume adjustment through HMI, no manual adjustment required.
- Product contact parts are made in stainless steel 304 & 316
- Easily controls level of product by level sensor
- Max. dosing volume 45 cc.



APPLICATIONS



- Liquid Dish Washer



- Ketchup



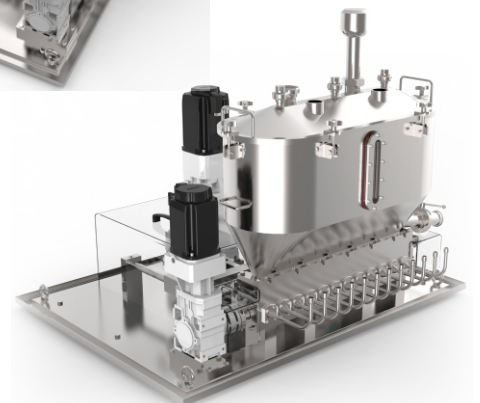
- Shampoo/Conditioner



- Oil



- Liquid Adhesives



FLEXI WEIGH BELT WEIGHER



FEATURES

- Ideal for packing non-dusty, free flowing and granular products.
- The product is conveyed from the product hopper using a belt.
- Available in different models: Up to 1kg. (130BW), up to 5kg. (220BW) or up to 25kg. (320BW)
- Min dosing volume 100 cc. , Max. dosing volume 30000 cc.

APPLICATIONS



FLEXI WEIGH NET SCALE WEIGHER

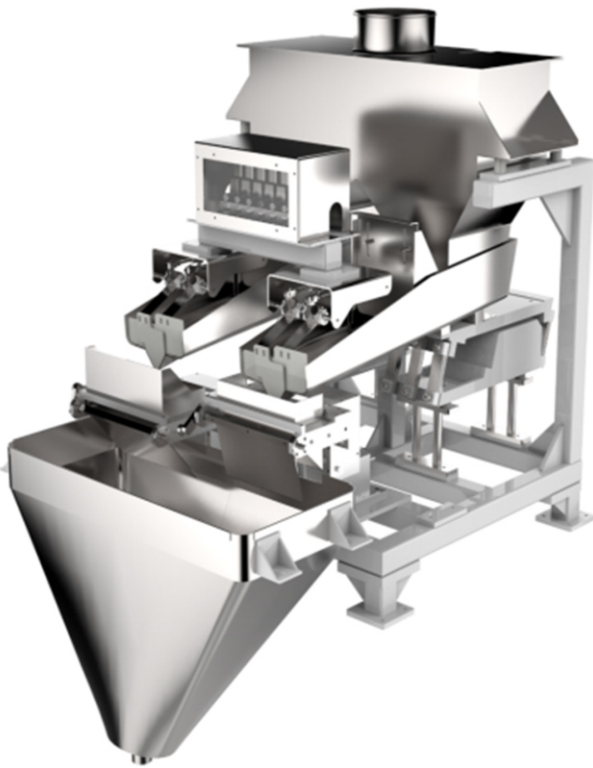
FEATURES

- Excellent solution for weighing dusty, free flowing products.
- The product is conveyed from a vertical hopper and metered through a flap.
- All contact parts constructed in stainless steel and totally enclosed...
- Very few moving parts.
- Multi dump for higher pack sizes.
- Min dosing volume 100 cc. , Max. dosing volume 10000 cc.

APPLICATIONS



FLEXI WEIGH LINEAR WEIGHER



FEATURES

- Ideal when an assortment of products needs to be weighed on the same machine.
- All contact parts constructed in stainless steel.
- Specially designed for products with resistive flow properties.
- Best-suited for light weight products like shredded cheese, flakes, chips, breakfast cereals etc.
- Min dosing volume 100 cc. , Max. dosing volume 10000 cc.

APPLICATIONS



● Sugar



● Rice



● Agrochemicals



● Lentils



● Oats



● Animal Feed

MICRO LINEAR WEIGHER

FEATURES

- Excellent solution for weighing dusty, free flowing products
- All contact parts constructed in stainless steel and totally enclosed
- Multi dump for higher pack sizes
- Min dosing volume 4 cc. , Max. dosing volume 40 cc.

APPLICATIONS



● Lentils



● Agro Chemical Granules





ROVEMA
INDIA



Rovema India Pvt. Ltd.

Gat No. 768/3 Sanaswadi, Taluka Shirur, District Pune - 412207, India.

Phone : +91 8069803999

E-mail : info@rovemaindia.in

www.rovemaindia.in

